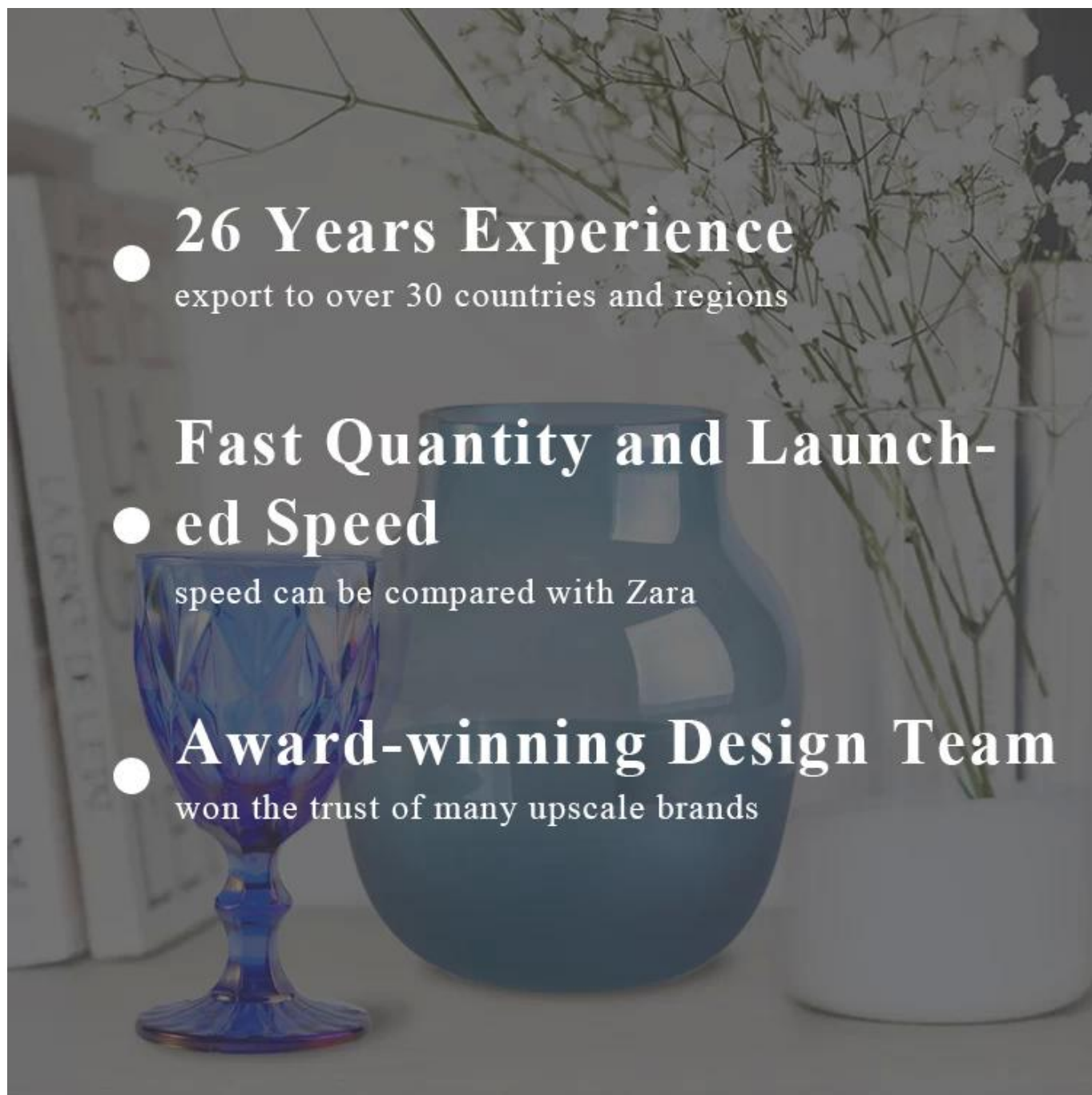


**yellow bubble fashion glass candle jar candle containers**  
**luxury green**



#### **Product Description**

---

The **luxury glass candle holder is** designed by our professional designers team. It is made from deep processing and kept good quality. It is suitable for home, wedding, party decorations and so on.

<b>product name</b>	<b>yellow bubble fashion glass candle jar candle containers luxury green</b>
<b>Sample time</b>	1. 5 days if at exist shaped and size of glass 2. 15 days if need new shape or size of glass
<b>Measure(mm)</b>	SG88100  Top dia.: 88mm Bottom dia.: 80mm Height: 100mm Capacity: 400ml Weight: 325g
<b>Packing</b>	Normal packing,Individual gift box, PVC box, window box, color box, white box, etc
<b>Delivery time</b>	Within 35 days after the sample and order confirmed
<b>Payment term</b>	30% deposit by T/T in advance and the balance against the copy of B/L
<b>Shipment</b>	By sea,by air,by Express and your shipping agent is acceptable
<b>Usage Occasion</b>	Home decor,Wedding Decoration,Wedding Favors,Decoration enhancement,

...om years”  
 (set showing for the first time in a decade, an increase  
 al kitchen exhibitors, retail experts like Mary Portas  
 stage, and a big focus on giftable kitchenware,  
 2017 is the place to be for cookshops

...set to return  
 5-9, will  
 a plethora  
 Turnities  
 's across  
 gifts and online  
 d learn about  
 yns, and the  
 35.

...offer,  
 K gift and  
 s can discover  
 signs and get  
 ings and get  
 impacting

...an, Dining  
 ion brings  
 x of suppliers  
 leware, wine  
 e, bakeware,  
 nd storage

...ne of the  
 recent years,  
 wing at Spring  
 in a decade,  
 for the first time  
 s, presenting  
 Gefu, Leopold  
 Scapani,  
 p of exhibitors,  
 st Housewares

...m, Meyer  
 bobbles,  
 T&G

...the second year of the  
 Spring Fair takes place February  
 5-9, 2017, with the doors open  
 5-9, 2017, with the doors open

...the second year of the  
 Spring Fair takes place February  
 5-9, 2017, with the doors open  
 5-9, 2017, with the doors open



5 minutes with...  
 Nick Davison.



At Spring Fair, we've enjoyed  
 great success in bringing key  
 suppliers and manufacturers back  
 into the show for 2017, and this  
 is easily the strongest line-up of  
 brands in recent history.

One of our biggest coups is  
 the news that Le Creuset will be  
 returning to the show for the first  
 time in over a decade.  
 Another returning exhibitor of  
 note is George East Housewares,

Within this section, we've  
 already confirmed the  
 participation of brands from as  
 far afield as Australia, Turkey and  
 America, as well as a host of  
 others from European countries  
 like Denmark, Spain and  
 Holland. There has never been  
 a better time for international

What kitchen tre  
 now debut, and  
 will dominate in  
 As with other set  
 retail market, we  
 colour play a big  
 next year – gold  
 and vibrant gree  
 seen on fashiona  
 tops and dining  
 the country, follo  
 latest Pantone pl  
 licensed ranges,  
 other Asian-influ  
 and patterns are  
 well as perennial

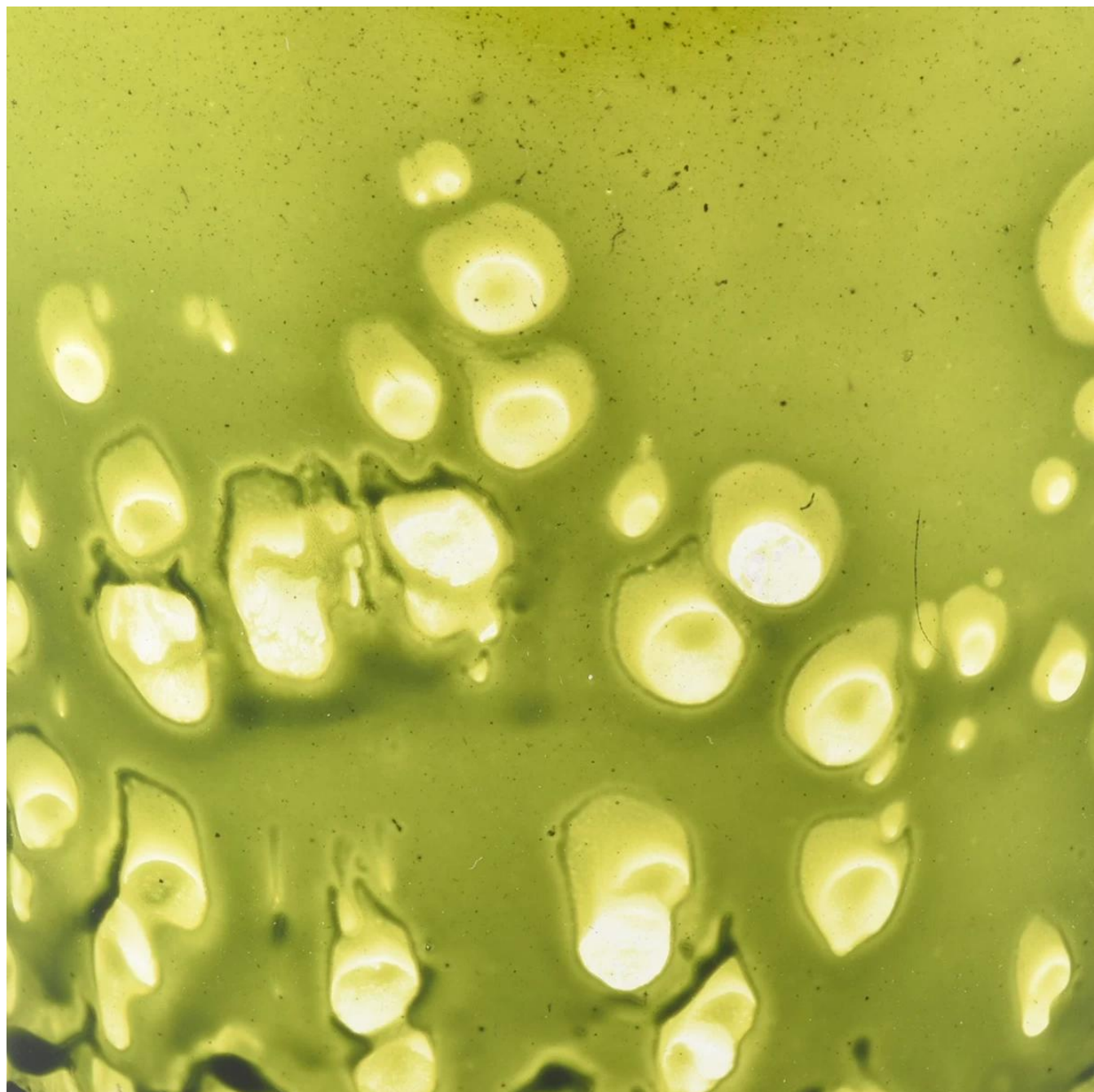
Spring Fair  
 th its new  
 is another  
 b return  
 alongside  
 nd Haus,  
 inds like  
 bid Vienna  
 see  
 ve into the  
 sewares hall  
 – the likes  
 Navigate.  
 mpany  
 ve a sizeable  
 now debut, and  
 discernable pattern  
 al companies  
 use Spring Fair as  
 their Launchpad into the UK  
 market.

Spring Fair  
 th its new  
 is another  
 b return  
 alongside  
 nd Haus,  
 inds like  
 bid Vienna  
 see  
 ve into the  
 sewares hall  
 – the likes  
 Navigate.  
 mpany  
 ve a sizeable  
 now debut, and  
 discernable pattern  
 al companies  
 use Spring Fair as  
 their Launchpad into the UK  
 market.

Spring Fair  
 th its new  
 is another  
 b return  
 alongside  
 nd Haus,  
 inds like  
 bid Vienna  
 see  
 ve into the  
 sewares hall  
 – the likes  
 Navigate.  
 mpany  
 ve a sizeable  
 now debut, and  
 discernable pattern  
 al companies  
 use Spring Fair as  
 their Launchpad into the UK  
 market.

Spring Fair  
 th its new  
 is another  
 b return  
 alongside  
 nd Haus,  
 inds like  
 bid Vienna  
 see  
 ve into the  
 sewares hall  
 – the likes  
 Navigate.  
 mpany  
 ve a sizeable  
 now debut, and  
 discernable pattern  
 al companies  
 use Spring Fair as  
 their Launchpad into the UK  
 market.





















**Process Craft**

---

# GlasswareTechnology



IS Machine



Machine Blown



Machine Pressed



Hand-Made

## **Packaging & Shipping**

---

We also have **our own professional and international logistic company** for your service.

We are your best choice without any concern.









## Exhibition

---

Sunny Glassware have taken part in various exhibitions since 2002 year, like Shanghai, London, Hongkong show.

We win customers'trust and recognition which improve our brand reputation.



There are more than 5000 products in Shenzhen sample room of Sunny Glassware for your reference.

Our products are famous for all around the world and of superior quality.

We trust firmly that it is too hard to find another suppliers like us in China.

Welcom to Shenzhen office!



# †SAMPLE ROOM‡



**Certifications**

---





## Sunny Story

Someone ask me, why Sunny Glassware is **the supplier of 80% fragrance brands in the United State**, take a second to listen to my story about candle holders order, you will understand Sunny always stay with you whatever it happens.

Last summer was really a great experience to us, J placed a big order with mass candle holders to Sunny Glassware at August 2018, everyone was so exciting and wanted to make it perfect .



Everything goes very well at the beginning, fast move, perfect communication, all is good. A small accessory became a big bomb which is out of our expectation, J wanted us to buy this small accessory in China but he told us this is a very difficult stuff, we digged 7 factories and one of them told us they can produce it. We are happy to know that and we took J and his designer K to the factory to have a look, well, J is really a smart person , he told me this factory can not produce that stuff when he first step into the workhouse, because he did not see a machine that can produce it since he has visited a factory in the US who can produce it. We have been asking the factory for a couple of questions and they were getting impolite and inpatient, J could tell from his face and he just run away very angry. I feel very sorry to J because we did not check it carefully with this factory and made him coming with no efforts. J is really great person and he never angry on me, he introduced a new factory that he found from his friends and wanted us to go, it was close to Chinese Lunar New Year, we booked the first class air tickets and our purchase manger Allen fly to the factory himself, it turns out this factory can not produce it as well, J has to produce it in the US and ship it to us for application finally.

# Who We Are

- More than 25 years experience glassware and ceramic ware supplier in China
- Innovative design capacity
- ISO9001 certificate approval
- Candle Holders, Bottles, Drinkware focus

Shenzhen Sunny Glassware Co.,Ltd

SUNNY GROUP

Modest

Passion

Collaborative

The first time when he shipped 200K pcs , all were melt because of hot temperature, it's really a big waste of material and air freight, it really took so long time to get the second shipment, timing left to us is very tight, we found out a solution which is to air ship it by cold chain transport and keep the accessories along with **air condition 24 hours**, we had to increase labor costs to have people work 6 more hours a day to get candle holders done in time, all problem resolved and things produced well.

Summer is the typhoon season we call it, two big typhoon in a month forced the custom to close the port which is the closest port to our factory, the delivery time was being a problem for J, we had to ship all 20 containers to the port 1000 Kms away to get those shipped in time, but this increase the extra truck costs to us like USD 16,000 and all absorbed by Sunny.

Finally, **no one get compensated, all things shipped in time**, we all are happy with that, this enable us to be a trust worthy partner to J, and **our business is getting prosperous day by day!**

## FAQ

### 1) Can you combine many items assorted in one container in my first order?

Yes, we can. But the quantity of each ordered item should reach our MOQ.

### 2) If any quality problem, how can you settle it for us?

When discharging the container, you need to inspect all the cargo. If any breakage or defect products were founded, you must take the pictures from the original carton. All the claims must be presented within 15 working days after discharging



the container. This date is subject to the arrival time of container.

### 3) why you choose us?

1. We have rich experiences in glassware trade for more than 20 years and the most professional team.
2. We have 10 production line and can manufacture 15 million pieces per month, we have strict processes enable us to maintain an acceptance rate above 99% .
3. We work with more than 1800 clients in about 80 countries.
4. We offer professional one-stop world-wide logistics service.

### 4) Can we get your free samples?

Yes, you can. Our **Samples are free** for the customers who confirm order. But the freight for express is on buyer's account.

### 5) How about your MOQ?

Different kind products will be different MOQ, for some glassware in stock, small orders are acceptable.

### 6) How many people in your R&D department?

We have 5 professional designers, and they will develop 15 innovative designs monthly.

### 7) Can you give me a discount about the price?

The price depends on your quantity, if you want good price with small order, you can make more quantity in one time, and leave them in our warehouse, we will keep the goods for you until you need.

Any concerns at your side please view more glassware by following platforms.



## BACK TO HOMEPAGE