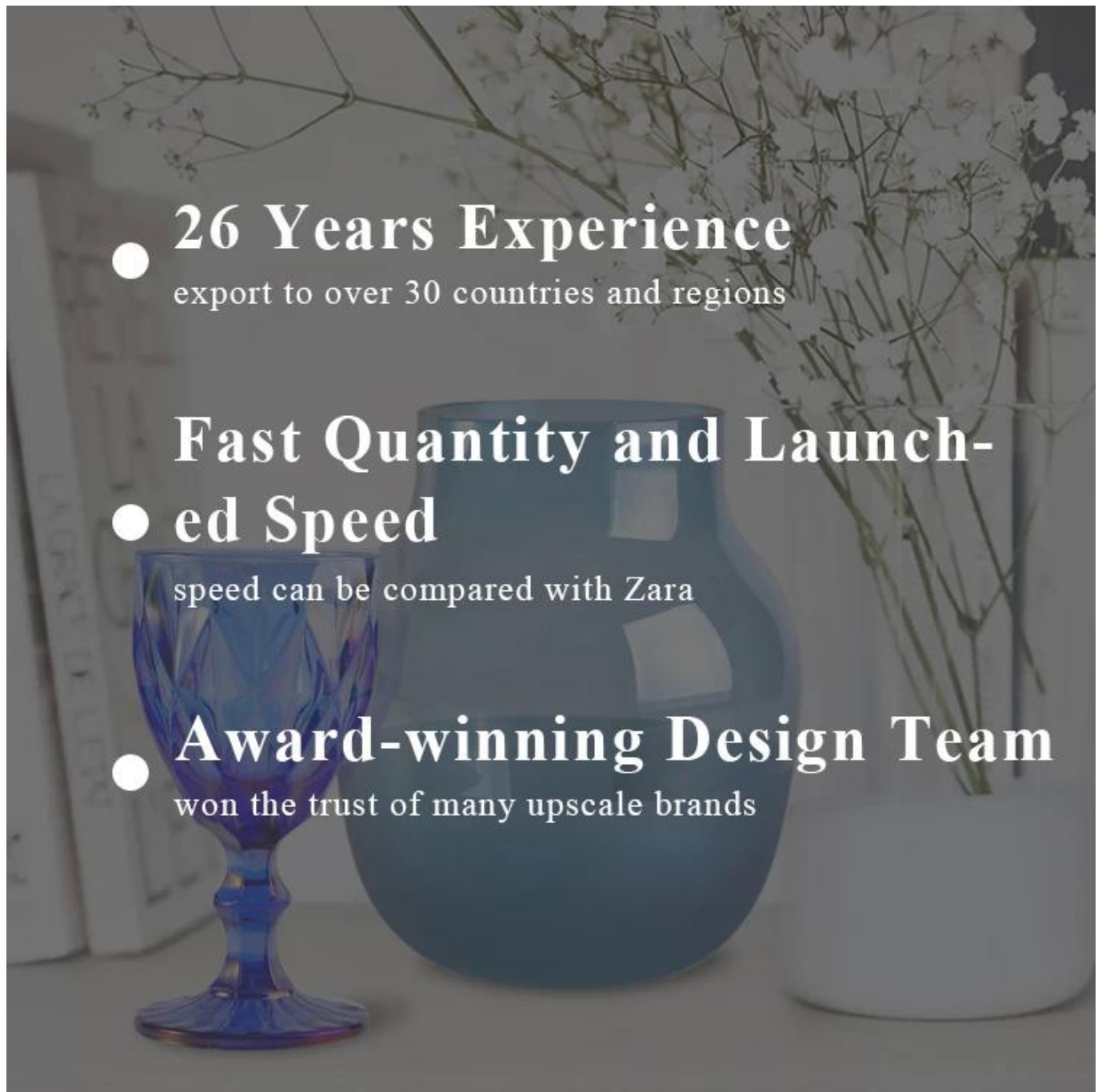


blue bubble candle holder electroplating with custom logo



Product Description

The **luxury glass candle holder is** designed by our professional designers team. It is made from deep processing and kept good quality. It is suitable for home, wedding, party decorations and so on.

product name	blue bubble candle holder electroplating with custom logo
Sample time	1. 5 days if at exist shaped and size of glass 2. 15 days if need new shape or size of glass
Measure(mm)	SG88100 Top dia.: 88mm Bottom dia.: 80mm Height: 100mm Capacity: 400ml Weight: 325g
Packing	Normal packing,Individual gift box, PVC box, window box, color box, white box, etc
Delivery time	Within 35 days after the sample and order confirmed
Payment term	30% deposit by T/T in advance and the balance against the copy of B/L
Shipment	By sea,by air,by Express and your shipping agent is acceptable
Usage Occasion	Home decor,Wedding Decoration,Wedding Favors,Decoration enhancement,

Coups of recent years

With Le Creuset showing for the first time in a decade, an increase in international kitchen exhibitors, retail experts like Mary Portas taking to the stage, and a big focus on giftable kitchenware, Spring Fair 2017 is the place to be for cookshops.

Spring Fair, set to return February 5-9, will provide a plethora of opportunities for buyers across multiples, independents and online retailers to source and learn about new products, solutions and the latest consumer trends.

With 14 sectors on offer, covering the entire UK gift and home market, retailers can discover the latest creative designs and get a taste for the trends impacting their category.

In Hall 9, the Kitchen, Dining and Housewares section brings together a diverse mix of suppliers that manufacture tableware, wine accessories, cookware, bakeware, kitchen gifts, SDAs and storage solutions.

This section has one of the strongest line-ups of recent years with Le Creuset showing at Spring Fair for the first time in a decade, and Haus showing for the first time in a number of years, presenting key brands such as Gerü, Leopold Zema, Nuance and Scanpan. They join a line-up of exhibitors including George East Housewares, Derby Brands, Dexam, Meyer Kitchen Craft, bobble, Housewares, Sabich, T&G

More than just buying
The immensely valuable Meet The Expert sessions will return, this year featuring masterclasses



5 minutes with

chosen Spring Fair to launch its new Dexam is another chosen to return to the event, alongside Able and Haus, featuring brands like Leopold Vienna started to see a resurgence in popularity. Housewares hall has strengthened – the likes of Navigate, a Brazilian company that will have a sizeable presence for its show debut, and international companies looking to use Spring Fair as their launchpad into the UK market.

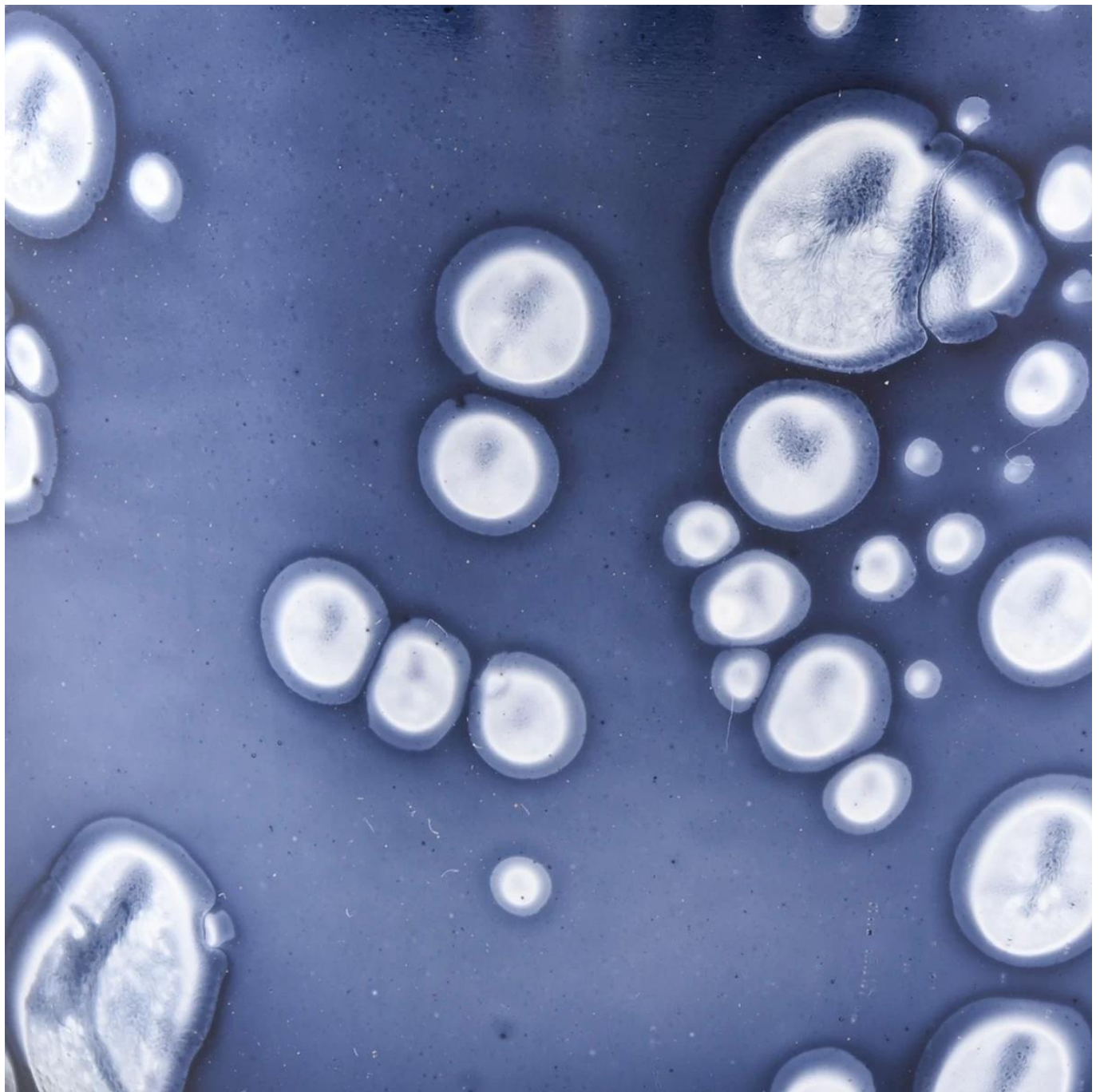
Within this section, we've already confirmed the participation of brands from as far afield as Austria, Turkey and America, as well as a host of others from European countries like Denmark, Spain and Holland. There has never been a better time for international

At Spring Fair, we've enjoyed great success in bringing key suppliers and manufacturers back into the show for 2017, and this is easily the strongest line-up of brands in recent history. One of our biggest coups is returning to the show for the first time in over a decade. Another returning exhibitor of note is George East Housewares,

less traditional products brands on display. Again, the likes of Prep Cookshop, Look Home and Borough Kitchen employ similar ideas, and most consumers that might not have considered shopping in place like this before.

How key is the kitchen gift at Spring Fair? The exhibitors in Kitchen Dining & Housewares make up almost 10 per cent of the overall

What kitchenware this edition? At Spring Fair, we've enjoyed great success in bringing key suppliers and manufacturers back into the show for 2017, and this is easily the strongest line-up of brands in recent history. One of our biggest coups is returning to the show for the first time in over a decade. Another returning exhibitor of note is George East Housewares,















Process Craft

Glassware Technology



IS Machine



Machine Blown



Machine Pressed



Hand-Made

Packaging & Shipping

We also have **our own professional and international logistic company** for your service.

We are your best choice without any concern.





Factory



Exhibition

Sunny Glassware have taken part in various exhibitions since 2002 year, like Shanghai, London, Hongkong show.

We win customers'trust and recognition which improve our brand reputation.



There are more than 5000 products in Shenzhen sample room of Sunny Glassware for your reference.

Our products are famous for all around the world and of superior quality.

We trust firmly that it is too hard to find another suppliers like us in China.

Welcom to Shenzhen office!

†SAMPLE ROOM‡



Certifications



Sunny Story

Someone ask me, why Sunny Glassware is **the supplier of 80% fragrance brands in the United State**, take a second to listen to my story about candle holders order, you will understand Sunny always stay with you whatever it happens.

Last summer was really a great experience to us, J placed a big order with mass candle holders to Sunny Glassware at August 2018, everyone was so exciting and wanted to make it perfect .



Everything goes very well at the beginning, fast move, perfect communication, all is good. A small accessory became a big bomb which is out of our expectation, J wanted us to buy this small accessory in China but he told us this is a very difficult stuff, we digged 7 factories and one of them told us they can produce it. We are happy to know that and we took J and his designer K to the factory to have a look, well, J is really a smart person , he told me this factory can not produce that stuff when he first step into the workhouse, because he did not see a machine that can produce it since he has visited a factory in the US who can produce it. We have been asking the factory for a couple of questions and they were getting impolite and inpatient, J could tell from his face and he just run away very angry. I feel very sorry to J because we did not check it carefully with this factory and made him coming with no efforts. J is really great person and he never angry on me, he introduced a new factory that he found from his friends and wanted us to go, it was close to Chinese Lunar New Year, we booked the first class air tickets and our purchase manger Allen fly to the factory himself, it turns out this factory can not produce it as well, J has to produce it in the US and ship it to us for application finally.

Who We Are

- More than 25 years experience glassware and ceramic ware supplier in China
- Innovative design capacity
- ISO9001 certificate approval
- Candle Holders, Bottles, Drinkware focus



Shenzhen Sunny Glassware Co.,Ltd

SUNNY GROUP

Modest

Passion

Collaborative



The first time when he shipped 200K pcs , all were melt because of hot temperature, it's really a big waste of material and air freight, it really took so long time to get the second shipment, timing left to us is very tight, we found out a solution which is to air ship it by cold chain transport and keep the accessories along with **air condition 24 hours**, we had to increase labor costs to have people work 6 more hours a day to get candle holders done in time, all problem resolved and things produced well.

Summer is the typhoon season we call it, two big typhoon in a month forced the custom to close the port which is the closest port to our factory, the delivery time was being a problem for J, we had to ship all 20 containers to the port 1000 Kms away to get those shipped in time, but this increase the extra truck costs to us like USD 16,000 and all absorbed by Sunny.

Finally, **no one get compensated, all things shipped in time**, we all are happy with that, this enable us to be a trust worthy partner to J, and **our business is getting prosperous day by day!**

FAQ

1) [Can you combine many items assorted in one container in my first order?](#)

Yes, we can. But the quantity of each ordered item should reach our MOQ.

2) [If any quality problem, how can you settle it for us?](#)

When discharging the container, you need to inspect all the cargo. If any breakage or defect products were founded, you must take the pictures from the original carton. All the claims must be presented within 15 working days after discharging

the container. This date is subject to the arrival time of container.

3) why you choose us?

1. We have rich experiences in glassware trade for more than 20 years and the most professional team.
2. We have 10 production line and can manufacture 15 million pieces per month, we have strict processes enable us to maintain an acceptance rate above 99% .
3. We work with more than 1800 clients in about 80 countries.
4. We offer professional one-stop world-wide logistics service.

4) Can we get your free samples?

Yes, you can. Our **Samples are free** for the customers who confirm order. But the freight for express is on buyer's account.

5) How about your MOQ?

Different kind products will be different MOQ, for some glassware in stock, small orders are acceptable.

6) How many people in your R&D department?

We have 5 professional designers, and they will develop 15 innovative designs monthly.

7) Can you give me a discount about the price?

The price depends on your quantity, if you want good price with small order, you can make more quantity in one time, and leave them in our warehouse, we will keep the goods for you until you need.

Any concerns at your side please view more glassware by following platforms.



BACK TO HOMEPAGE