

Product Description

Product name 580ml matt black line sense ceramic candle holder for candle making

Sample time
1. 5 days if at exist shaped and size of glass
2. 15 days if need new shape or size of glass

Top dia: 100mm

Bottom dia: 100mm

Measure(mm) Height: 100mm

Weight: 350g

Capacity: 580ml







Specification

Packing Normal packing, Individual gift box, PVC box, window box, color box, white box, etc

Payment term 30% deposit by T/T in advance and the balance against the copy of B/L

Shipment By sea, by air, by Express and your shipping agent is acceptable

Packing & Delivery

To better ensure the safety of your goods, professional, environmentally friendly, convenient and efficient packaging services will be provided.

Different From The Peer



Own professional shipping company(Shenzhen Sunny Worldwide logistics)

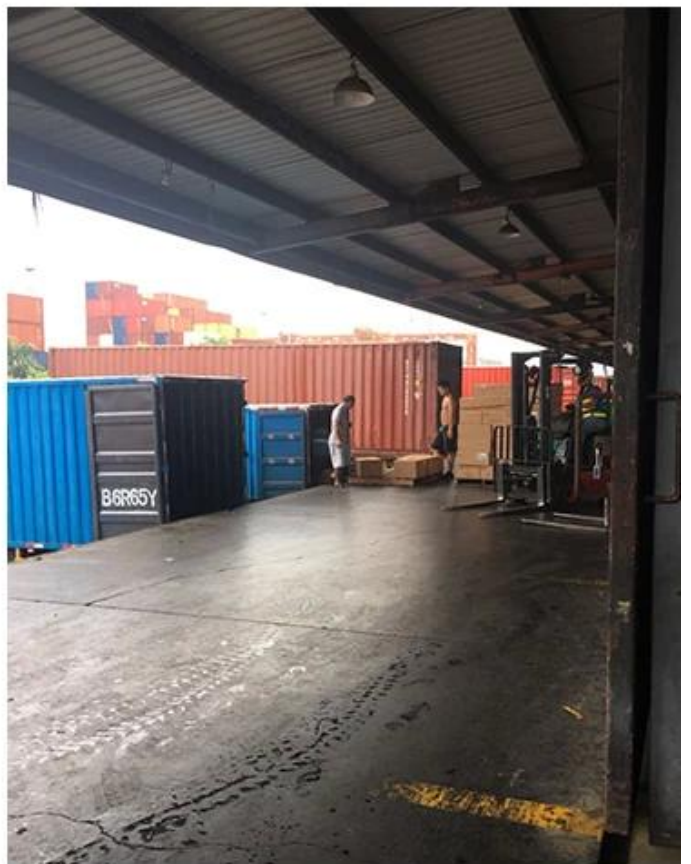


20+ years freight history and WCA members.

Different From The Peer



Own professional shipping company
(Shenzhen Sunny Worldwide logistics)
20+ years freight history
and WCA members



Company Profile
Exhibition

EXHIBITION



Sample Room

Sunny Sample Room



There are over 5000 products in sample room of Sunny Glassware for your choice. No second Co. in China!



Certifications

CERTIFICATES



FAQ

FAQ

☐ Q1: Do you accept small order?

Yes, any quantity would be acceptable if we have stocks.

☐ Q2: Do you have any other colors/sizes for this kind of jar?

Any colors can be customized according to pantone number or your sample, the we have some hot sale regular sizes for you to choose, if you want to make new sizes we can also open new molds.

☐ Q3: What kind of lids you can offer?

We can provide lids in different materials like glass, ceramic, metal, wood, concrete and plastic ect.

☐ Q4: Do you have certification for your products?

Yes, for the glassware, have ASTM. CA65 test , FDA etc.

☐ Q5: Do you accept Third party inspection?

Yes,we accept it.It`s the normal way for many clients.

☐ Q6: How to ensure the production quality is what I need?

We will do the production and inspect the goods by sample we both approved. If you have more requirement for the product quality,we should discuss the quality standard before we place the order.

☐ Q7: How could I get a sample?

We offer free samples for those we keep in stock, for custom samples we need 7~10 to get samples ready. Sample fee could be pay by Paypal, Alibaba, or bank.

☐ Q8: What's your MOQ of ceramic jars?

The moq of a single order is 3000 pcs, 1000 pcs each color is acceptable

☐ Q9: Why your sample cost is so expensive?

Sample cost is mainly for labor cost, it is not equal to unit price.

☐ Q10: Could you arrange shipment for us together?

Yes, we can. We have a professional logistics department which help many of our customers handle shippments, if you need we arrange shipping, please tell us your company or warehouse address and we can quote DDU price to you check together

